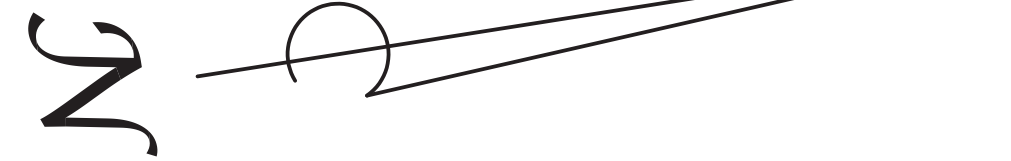


Slope Analysis

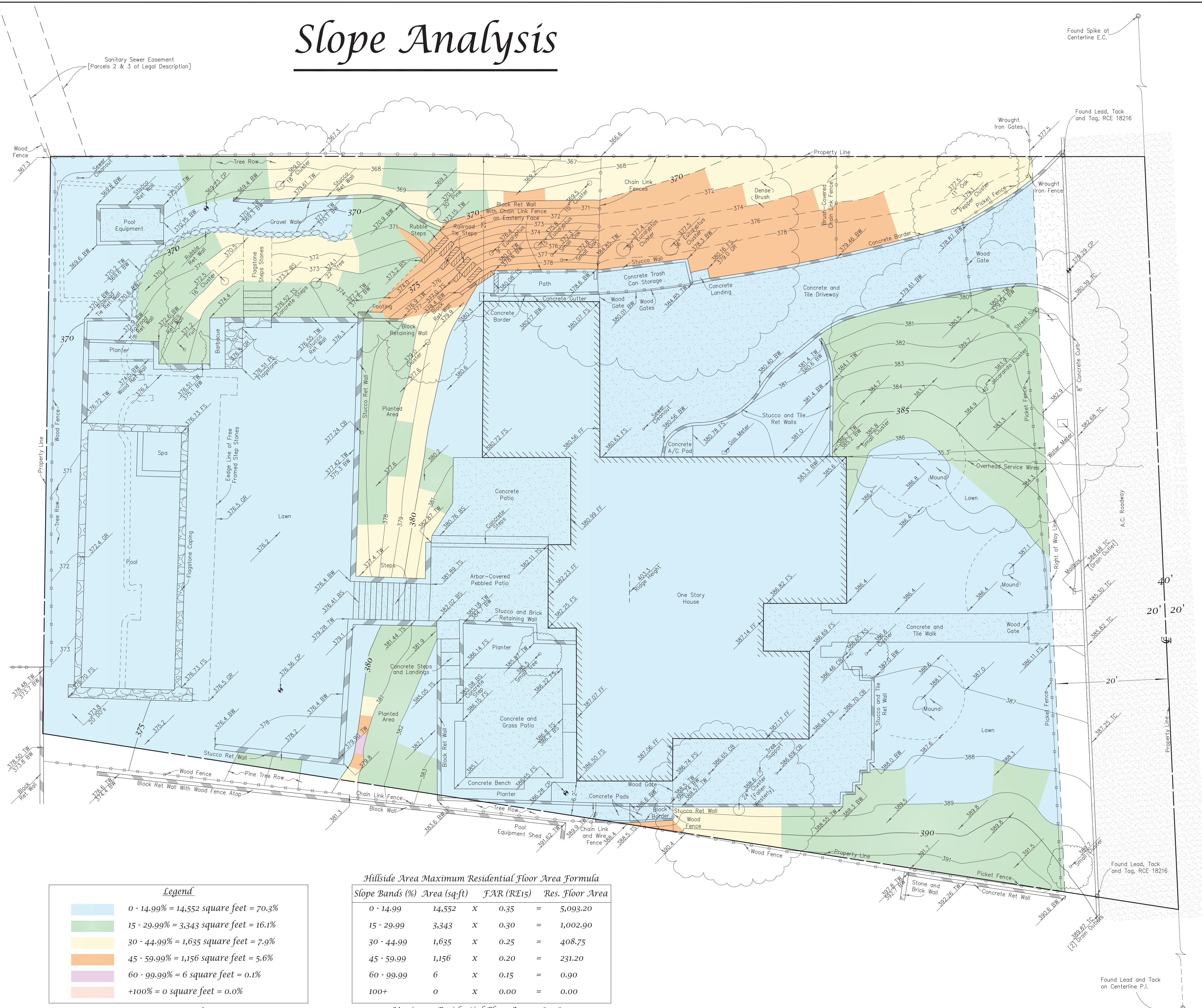


Scale: 1" = 8'

Legend

- FF = Finished Floor
- FS = Finished Surface
- CB = Catch Basin
- BW = Bottom of Wall
- TC = Top of Wall
- TS = Top of Step
- BS = Bottom of Step
- CP = Control Point
- GR = Ground
- Ret = Retaining
- A/C = Air Conditioner

Note: Hatch Patterns and Tree Drip Lines Are Not to Scale



Legend	
	0 - 14.99% = 14,552 square feet = 70.3%
	15 - 29.99% = 3,343 square feet = 16.1%
	30 - 44.99% = 1,635 square feet = 7.9%
	45 - 59.99% = 1,156 square feet = 5.6%
	60 - 99.99% = 6 square feet = 0.1%
	+100% = 0 square feet = 0.0%

Net Area = 20,692 square feet, 0.48 acres

Hillside Area Maximum Residential Floor Area Formula				
Slope Bands (%)	Area (sq-ft)	FAR (RE15)	Res. Floor Area	
0 - 14.99	14,552	x 0.35	=	5,093.20
15 - 29.99	3,343	x 0.30	=	1,002.90
30 - 44.99	1,635	x 0.25	=	408.75
45 - 59.99	1,156	x 0.20	=	231.20
60 - 99.99	6	x 0.15	=	0.90
100+	0	x 0.00	=	0.00

Maximum Residential Floor Area = 6,736.95

Found Lead and Tack on Centerline P.I.